

Pat Haley
Monroe County Recorder IN
IN 2004018777 SPL
08/24/2004 10:52:31 2 PGS
Filing Fee: \$23.00

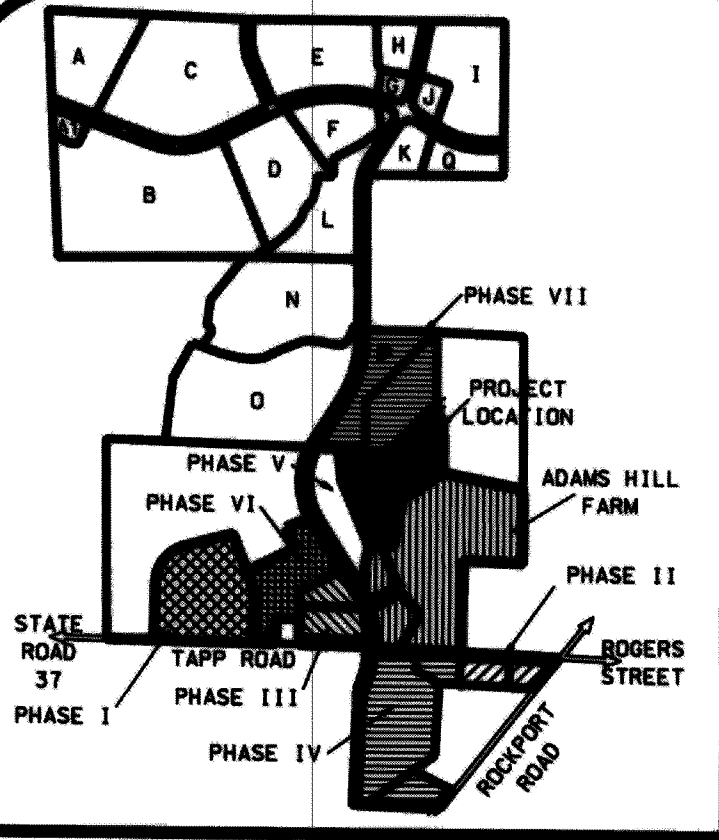
SUNFLOWER GARDENS PHASE I
FORMERLY A PART OF LOT 14
WOOLERY PLANNED
COMMUNITY PHASE VII
FINAL PLAT

DULY ENTERED
FOR TAXATION

JUL 15 2004

Barbara M. Clark
Auditor Monroe County, Indiana

L = 13.08'
Δ = 01°35'42"
R = 470.00'
CD = 544°39'58"W
LC = 13.08'

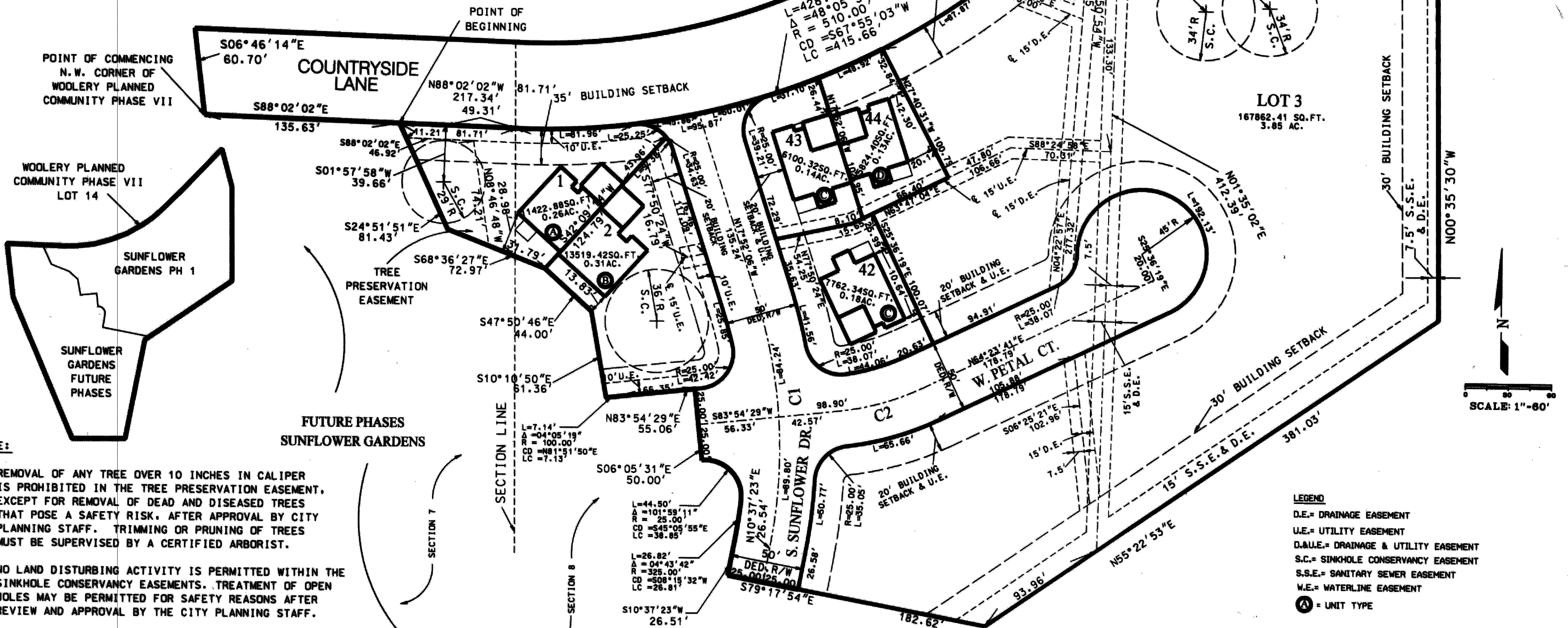


LOCATION MAP
NO SCALE

CURVE DATA TABLE					
CURVE	LENGTH	DELTA	RADIUS	TANGENT	CHORD
C1	174.04	28°29'29"	350.00	88.08	S03°37'22"E 172.26
C2	59.60	19°30'48"	175.00	30.09	N74°09'05"E 59.31

ADDRESSES		
LOT No.	ROAD NAME	
1	1545 W. Countryside Lane	
2	2586 S. Sunflower Drive	
42	1460 W. Petal Court	
43	1437 W. Countryside Lane	
44	1433 W. Countryside Lane	

TYPICAL UNITS
NOT TO SCALE



NOTE:

1. REMOVAL OF ANY TREE OVER 10 INCHES IN CALIPER IS PROHIBITED IN THE TREE PRESERVATION EASEMENT, EXCEPT FOR REMOVAL OF DEAD AND DISEASED TREES THAT POSE A SAFETY RISK. AFTER APPROVAL BY CITY PLANNING STAFF. TRIMMING OR PRUNING OF TREES MUST BE SUPERVISED BY A CERTIFIED ARBORIST.
2. NO LAND DISTURBING ACTIVITY IS PERMITTED WITHIN THE SINKHOLE CONSERVANCY EASEMENTS. TREATMENT OF OPEN HOLES MAY BE PERMITTED FOR SAFETY REASONS AFTER REVIEW AND APPROVAL BY THE CITY PLANNING STAFF.
3. DRIVEWAYS ARE NOT SHOWN ON PLAT. SOME WERE NOT CONSTRUCTED AT TIME OF PLATTING.
4. SUNFLOWER GARDENS PHASE I LOT 3 WILL BE REPLATTED INTO NEW LOTS & UNITS AS CONSTRUCTION OF THIS PHASE CONTINUES.

LEGEND

- D.E. = DRAINAGE EASEMENT
U.E. = UTILITY EASEMENT
D.&U.E. = DRAINAGE & UTILITY EASEMENT
S.C. = SINKHOLE CONSERVANCY EASEMENT
S.S.E. = SANITARY SEWER EASEMENT
W.E. = WATERLINE EASEMENT
Ⓐ = UNIT TYPE

Prepared by: Bledsoe Tapp & Riggert, Inc. Job No. 4176
1351 West Tapp Road Bloomington, IN 47403 (812) 336-8277 SHEET 1 OF 2